



# Lake Havasu MPO Bicycle and Pedestrian Implementation Plan

PUBLIC MEETING

APRIL 18, 2018

Lake Havasu MPO  
METROPOLITAN PLANNING ORGANIZATION

# Objectives

- ▶ Improve safety and accessibility for bicyclists and pedestrians in the Lake Havasu Region
- ▶ Identify and prioritize a comprehensive network of biking and walking facilities

# Public Survey

## **265 Responses Online, at Stakeholder/Public Meetings**

Top reasons why more people don't bicycle and walk:

- ▶ Vehicle speeds/poor motorist behavior
- ▶ Lack of bike lanes/sidewalks
- ▶ Difficult to cross streets/intersections
- ▶ Lack of street lighting

# Public Survey

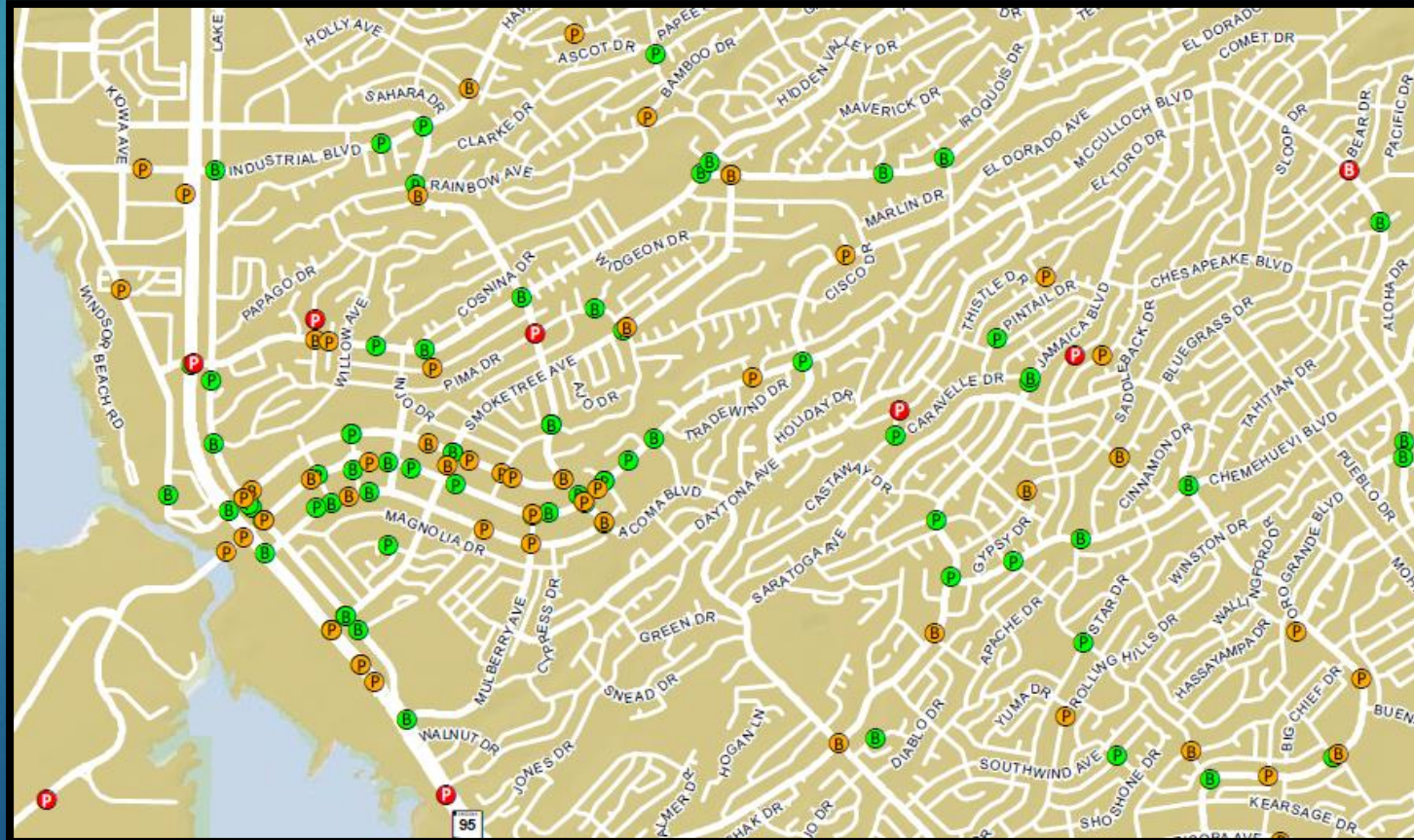
## Wish List:

- ▶ Multiuse Paths/Facilities:
  - ▶ Downtown/McCulloch
  - ▶ Schools, Parks, Trails
  - ▶ Neighborhoods
  - ▶ Island
  - ▶ I-40



# Crashes 2007-2016

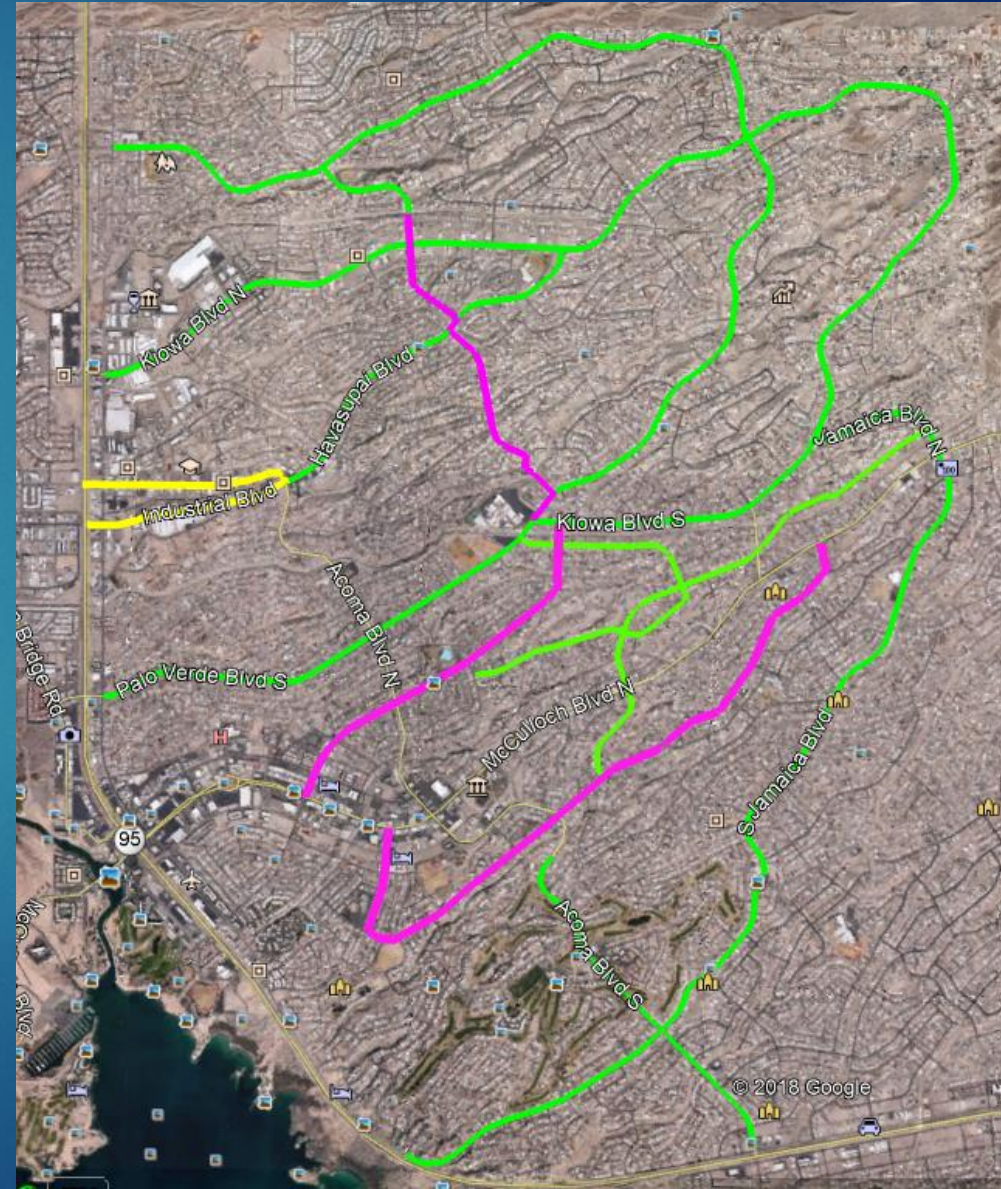
- ▶ 87 Pedestrian Crashes (8 Fatalities)
- ▶ 79 Bicycle Crashes (2 Fatalities)





# Low-Stress Bike Network

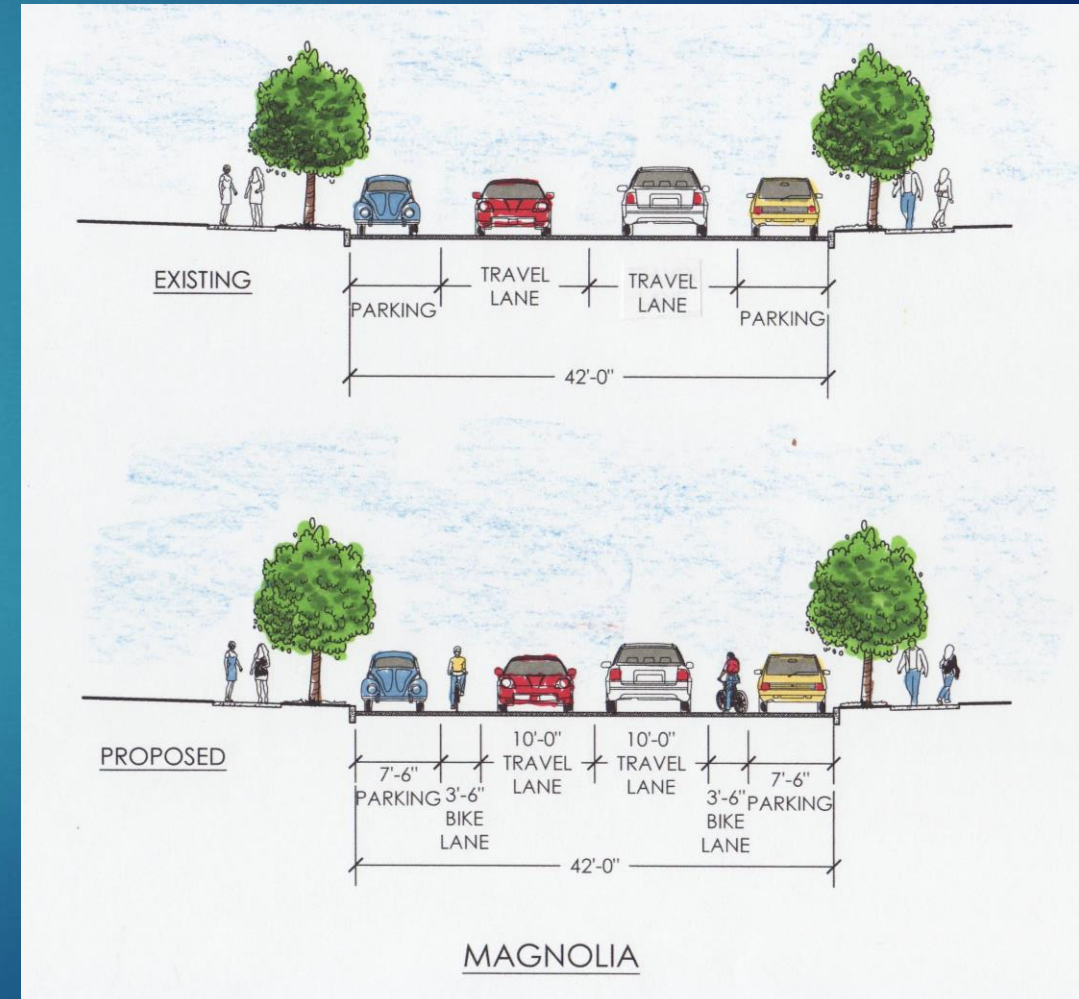
- ▶ Some existing low-volume streets
  - ▶ Smoketree
  - ▶ Avalon/Empress
- ▶ Streets with existing parking lanes
  - ▶ Daytona
  - ▶ El Dorado
  - ▶ Cisco
  - ▶ Jamaica
  - ▶ Kiowa
  - ▶ Havasupai
  - ▶ Palo Verde





# Additional Bike Evaluation

- ▶ 'Reliever' bike routes for McCulloch
  - ▶ Swanson
  - ▶ Mesquite
  - ▶ Magnolia



# Additional Bike Evaluation

- ▶ Acoma solution – could involve creating a ‘wide’ shared outside lane





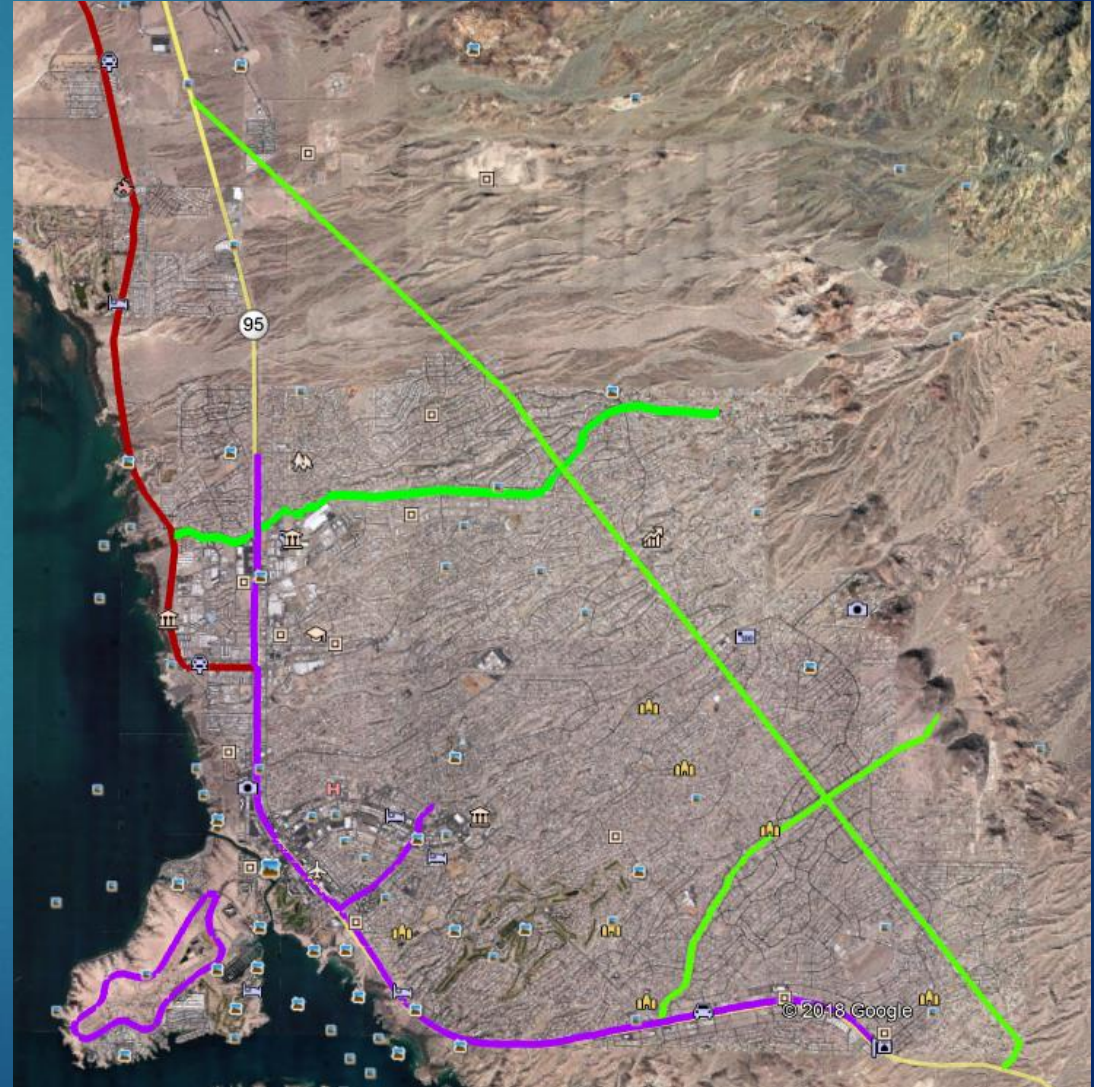
# Pedestrian (Sidewalk) Gaps Around Schools





# Trails

- ▶ Powerline
- ▶ Chemehuevi Wash
- ▶ Pima Wash
- ▶ Island Loop
- ▶ SR 95
- ▶ Old SR 95



# Unincorporated Area Possibilities

## Regional and Recreational Bicycle Network

- ▶ Complete London Bridge Road, Fathom Drive Loop, and Chenoweth Road

## Neighborhood Collector Bicycle Paths

- ▶ Complete bicycle lane delineation on Lake Drive, Pero Drive, and Jacob Row consistent with these streets functioning as residential collectors



Questions?